



hausman  
& holmes

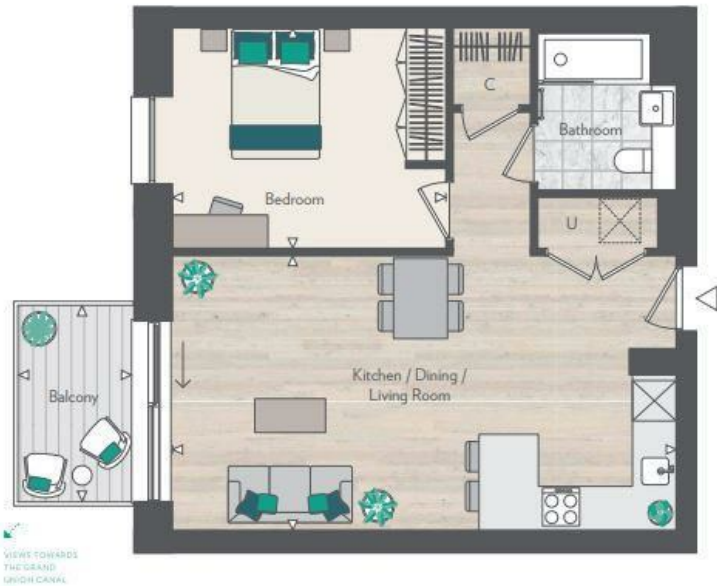
Alperton, HA0

Asking Price £430,500



## One bedroom home

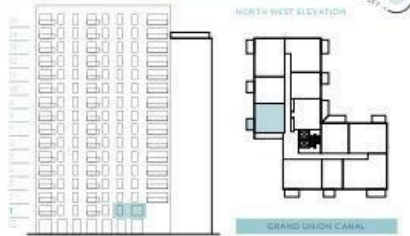
Apartment 406  
Floor 1



VIEWS TOWARDS  
THE GRAND  
UNION CANAL

Measurement points  
U Utility cupboard  
C Cupboards  
Privacy screen  
Washing machine  
Built in appliances

TOTAL INTERNAL AREA	58 sq m	619 sq ft
TOTAL EXTERNAL AREA	5.5 sq m	59 sq ft
Kitchen / Dining / Living	4.73m x 7.52m	13'6" x 24'8"
Bedroom	5.30m x 4.07m	10'10" x 15'4"
Balcony	5.04m x 1.80m	9'10" x 5'10"



Floorplans are scaled individually to fit the page and are not necessarily drawn at the same scale as other plans. Floorplans shown for Grand Union are for approximate measurement only. Exact heights and sizes may vary. All measurements may vary within a tolerance of 1%. The dimensions are not intended to be used for project costs, application sizes or terms of insurance. Particular layouts are indicative only. Kitchen layout is indicative only. Please ask Sales Consultant for further information.



- Canalside near Wembley Stadium
- 14 acres of green spaces
- Social and wellness spaces

- 24/7 concierge
- Top Universities nearby
- Gym, Cinema & Bowling Alley



020 8458 8555

57 Golders Green Road

London NW11

info@hausmanandholmes.com

Energy Efficiency Rating	
Very energy efficient - lower running costs	Current Potential
(92 plus) A	
(81-91) B	
(69-80) C	
(55-68) D	
(39-54) E	
(21-38) F	
(1-20) G	
Not energy efficient - higher running costs	
England & Wales	EU Directive 2002/91/EC

Compliant with RICS code of measuring practice, Particulars and floor plans are only a guide to the property and do not constitute or form part of any offer or contract and are not to be regarded as representation of fact. Any intending purchaser must satisfy themselves as to the accuracy of these particulars as they are given without responsibility. No person in the employment of Hausman and Holmes has any authority to make or give representation or warranty to properties being sold.